



September 9, 2025 – Release

Feature Additions – most add to the LA & EMA series

- * ** User Story 4891 ** Add Automation 1 Support
- * ** User Story 4955 ** Support Static Assist In A1
- * ** Development Task 4947 ** A1 Ethernet Connection
- * ** Feature 4942 ** Add "Analog Control" to A3200 Task 5

Enhancements

- * ** Feature 4740 ** Various Performance Improvements
- * ** User Story 4895 ** Remember user filters when you close program
- * ** User Story 4928 ** Splash Screen Improvement
- * ** User Story 4941 ** A switch that makes all signals in a collection move when one signal is selected

Bug Fixes –

- * ** Bug 4889 ** A1 drive Program freezes if you hit "set live wave" button
- * ** Bug 4921 ** Live Scope X Axes Misaligned
- * ** Bug 4922 ** Test Builder does not require stop analog tracking after start
- * ** Bug 4937 ** Multiple select Delete No Longer Works
- * ** Bug 4938 ** Diagnostic View Zoom Gets stuck On First File Viewed
- * ** Bug 4943 ** Spring Rater Can Only Open One File
- * ** Bug 4944 ** Test hangs if "pop" before "push"
- * ** Bug 4949 ** Spring Rater Can't Select Datacard
- * ** Bug 4950 ** Invalid Operation Exception on Tab Switch
- * ** Bug 4954 ** Target Invocation Exception Loading Test When Drive Profile Open Elsewhere
- * ** Bug 4958 ** A1 Probe ver 25.7.16.1555 E-stop reset and unexpected motion



Previous Releases
April 2025

CTW Automation presents release notes for Probe© version 25.4.24.1905

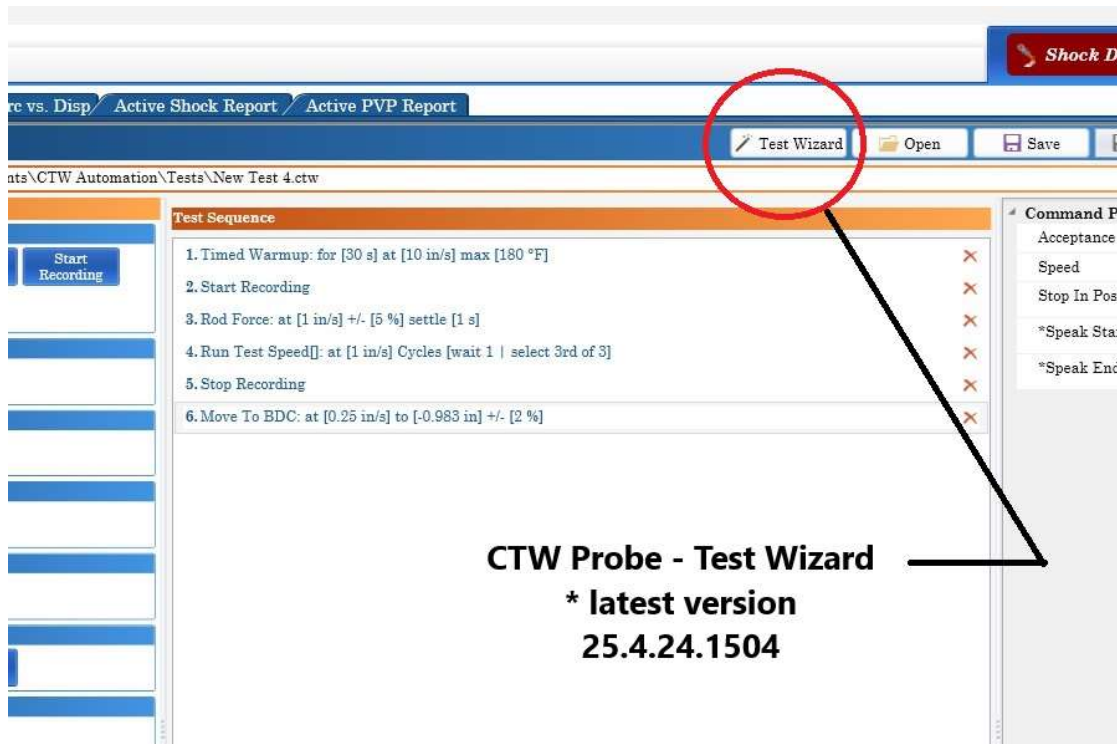
- ** Feature 4917 ** PVP - Peak Force with Peak Velocity version
- ** Feature 4920 ** Create Rotary Dyno Test Wizard
- ** User Story 4481 ** Signal vs Signal XY Plots
- ** User Story 4790 ** change Color of Multiple Runs at Once

- ** Feature 4740 ** Various Performance Improvements
- ** Feature 4898 ** Refresh button to reload the wave form for a custom wave form.
- ** User Story 4544 ** RD Series BDC indicator - green light for BDC

- * ** Bug 4656 ** Fix SerialActuatorCommon.ZylSerialPort.SerialException: COM3 is not open.
- * ** Bug 4695 ** Fix System.Threading.Tasks.TaskCanceledException
- * ** Bug 4714 ** ID and Run Name for LA and Crank type machines
- * ** Bug 4722 ** Fix CTW.Exceptions.UnexpectedValueException: Value pt is unexpected because it is Point array length must be greater than one
- * ** Bug 4726 ** Active PVP Report - does not react to a different PVP being selected
- * ** Bug 4737 ** Velocity/Generated Velocity Partially Processed in Diagnostic View
- * ** Bug 4809 ** LA - Fix "Brake On" Indicator - Check Brake Behavior
- * ** Bug 4811 ** Probe Takes A Long Time to Open when an Unavailable network drive is in the recent files list
- * ** Bug 4876 ** Copy/Paste in Test builder - copied items are linked to pasted items
- * ** Bug 4877 ** Custom Waveform with Outputs - Units do not change in plot
- * ** Bug 4878 ** Multi-Card Buffer sychronization error and Test open
- * ** Bug 4879 ** Custom Waveform with Outputs - Error check issue
- * ** Bug 4880 ** Test builder with Move to Position Relative does not allow negative moves.
- * ** Bug 4881 ** Test won't load if CustomWaveFormWithOutputs can't find csv
- * ** Bug 4897 ** Custom wave form has no Velocity channel
- * ** Bug 4910 ** Shock Zero Sensors Command does not allow channel selection
- * ** Bug 4911 ** Cannot select custom waveform as a run in diagnostic view
- * ** Bug 4916 ** Digital Data Not Saved to File for Multicard Data Setups

Test building Wizard

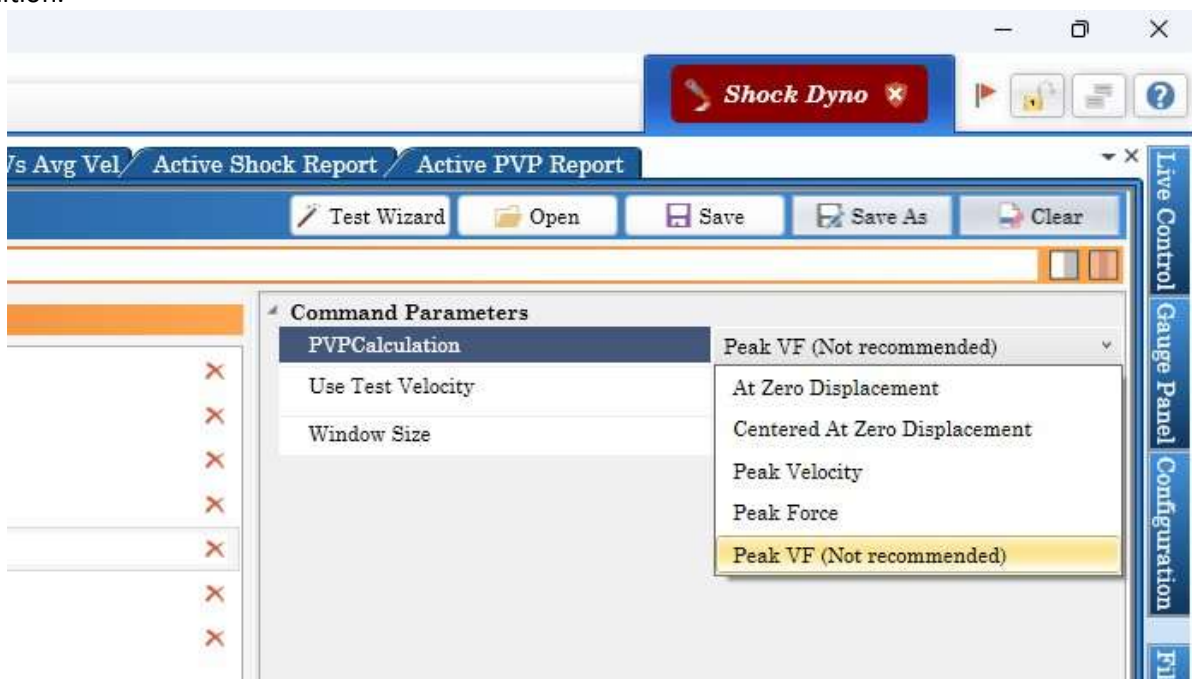
Use the built-in wizard to easily create tests of multiple speeds and PVP's



Test Wizard for the crank type machines

New PVP Method

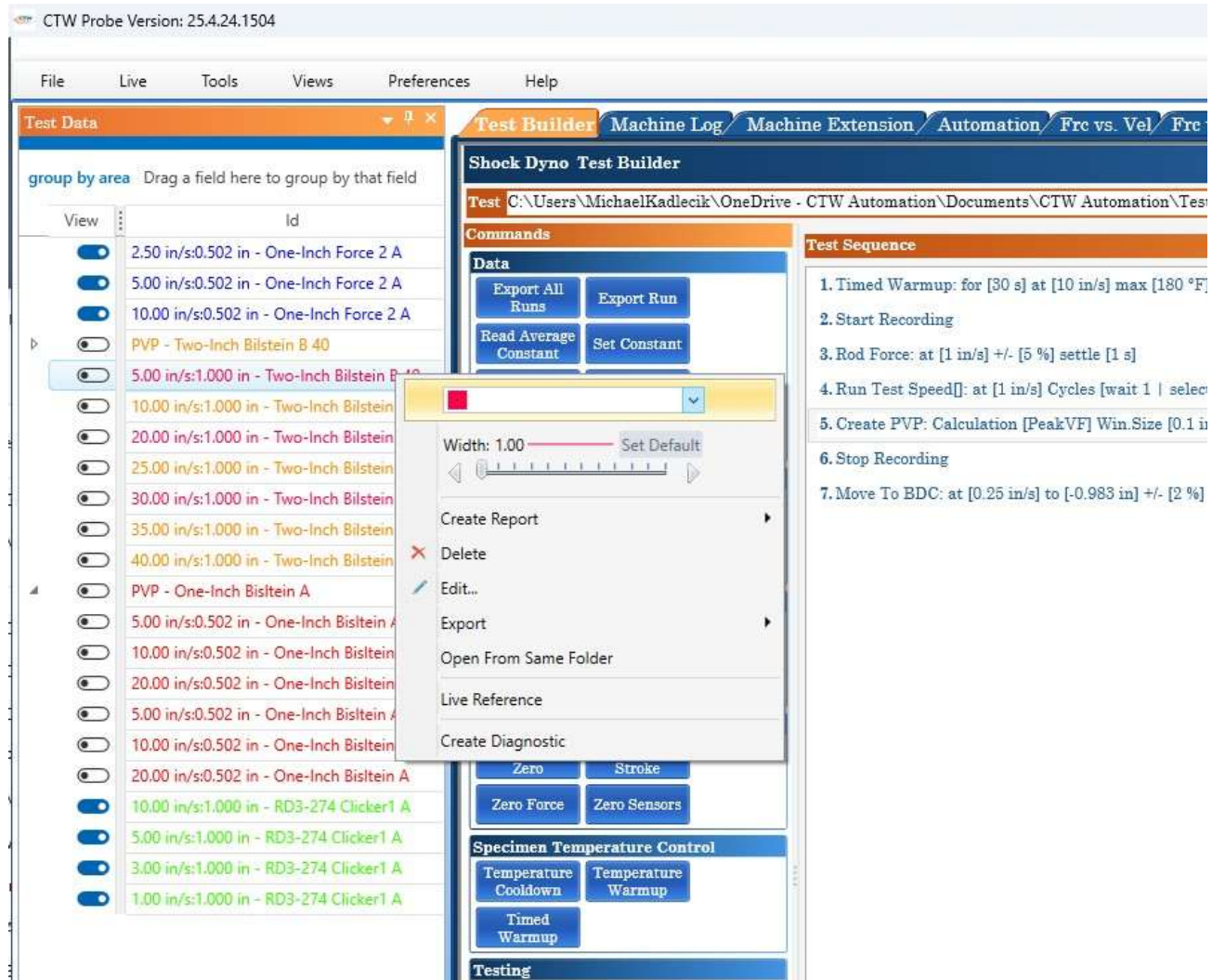
Using this method, Peak VF, you can run a PVP test, and a plot will be created that places the peak force at peak velocity regardless of if they occurred at the same point. This is a more advanced feature addition.



New PVP Method

Changing colors on multiple speeds

Using the "ctrl" key, you can select multiple speeds at one time and change all the colors at once.



Changing colors based on multiple selections at once

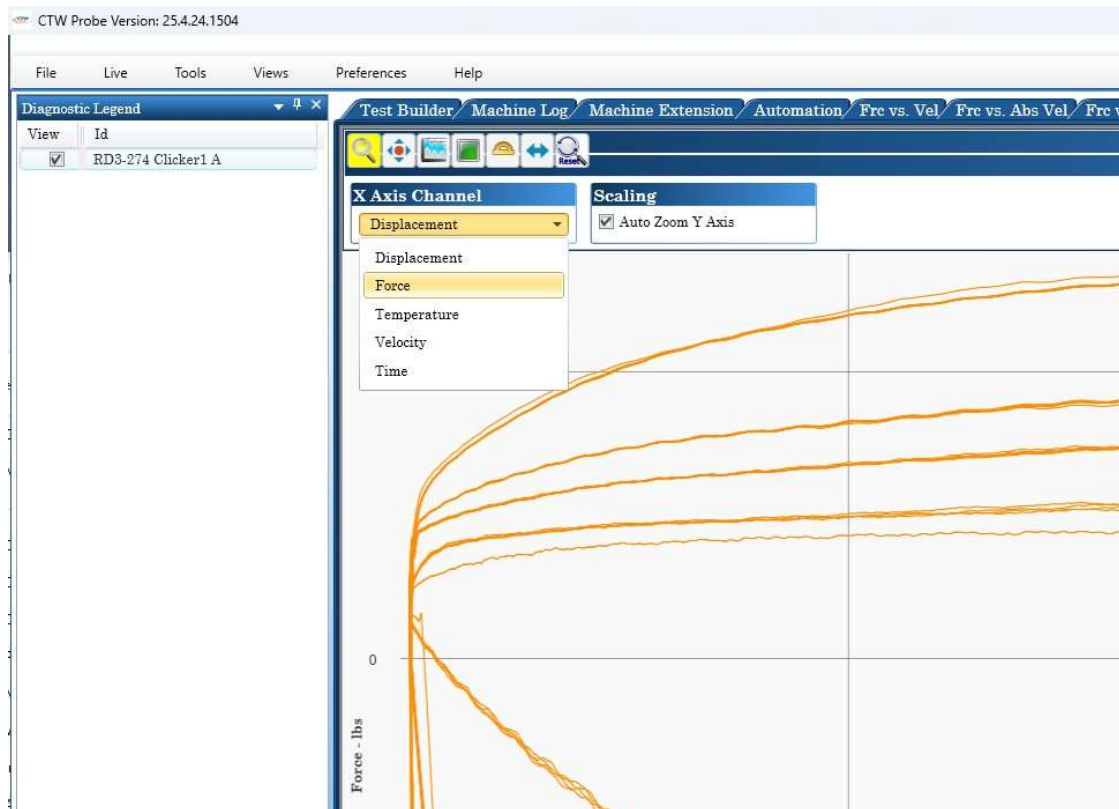
Signal vs Signal Feature

CTW's already powerful Diagnostic view has been expanded to include the ability to view plots of Signal vs. Signal. Thus, enabling you to view more data in different ways than before.

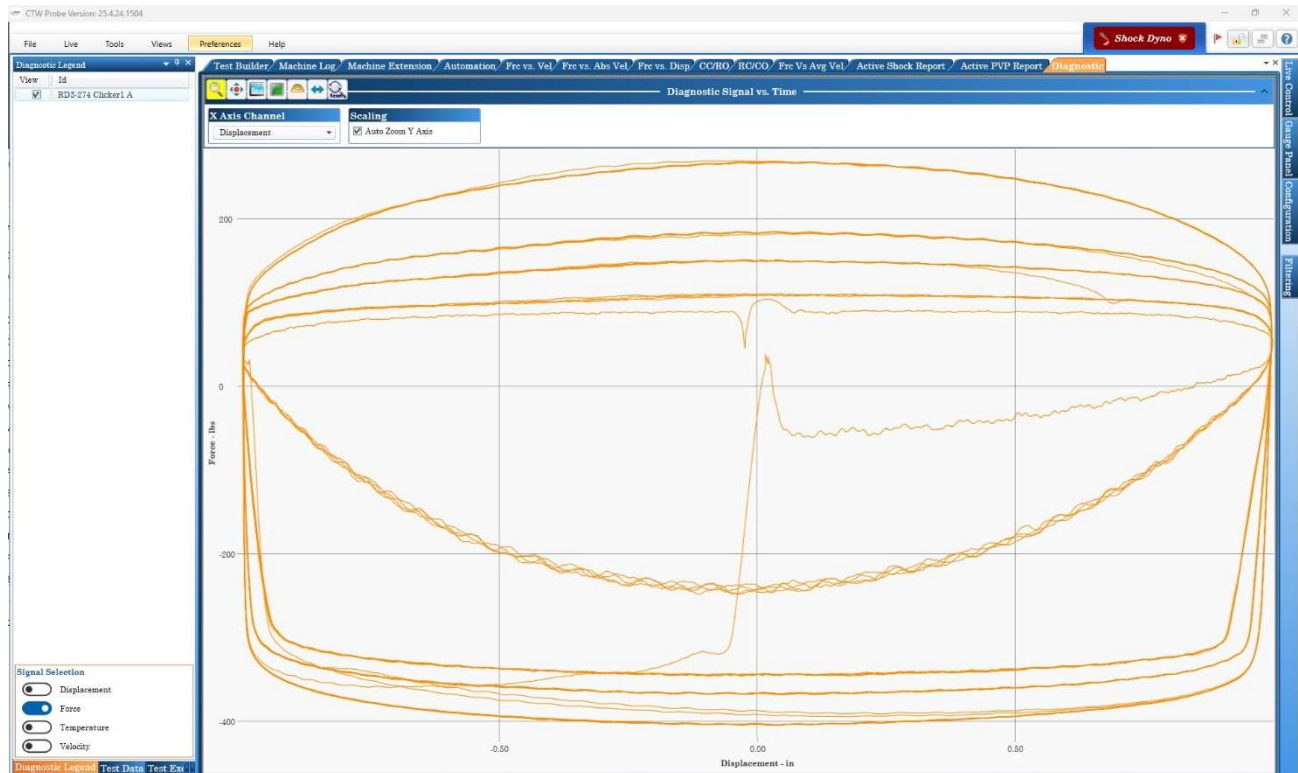
Create the Diagnostic by right-clicking on a speed. Choose your X-axis and then turn on the Y-axis signal(s) by selecting them in the table. In this manner, you can view all the cycles at one time for any given collection.

Further, you can load individual speeds to really focus on the damper and how it progresses through the run. This lets you know if it is potentially still reaching a steady state or is taking time to settle.

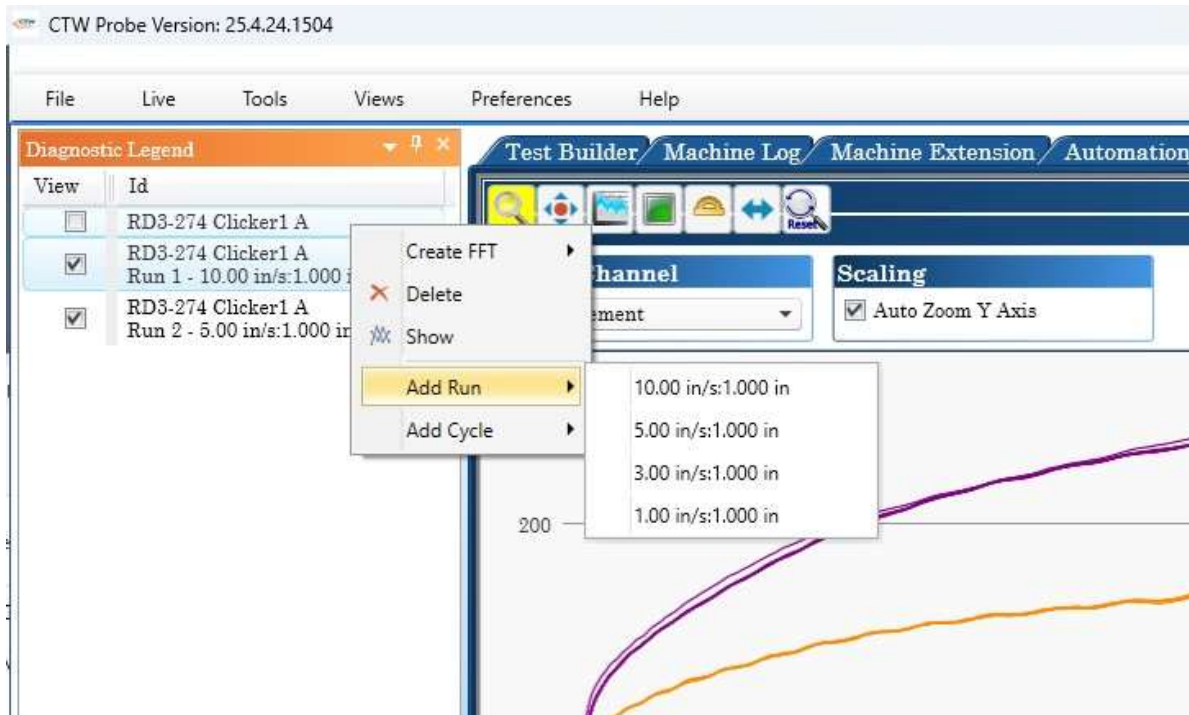
And, by switching the Axis, like Force and Displacement, you can generate a never-before-seen view of the damper.



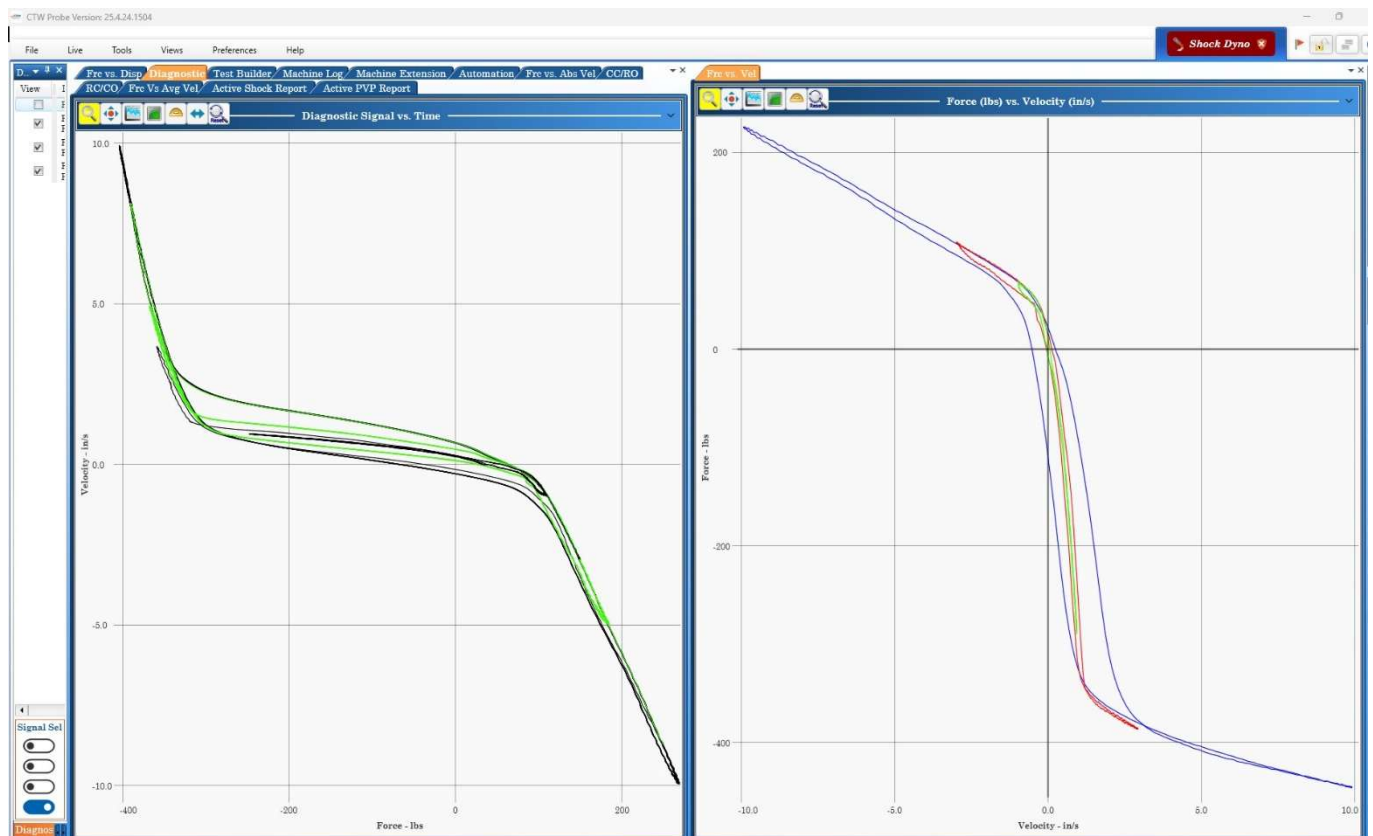
Choosing your X-axis



Force vs Displacement showing all the cycles for all the speeds



Adding individual speeds in Diagnostic



You can even view Velocity vs. Force, instead of Force vs. Velocity if you want a new view