

CTW Automation, Inc.

LA / EMA Software install for DEMO

This will help the User get the LA and EMA Probe software running in Demo mode on a computer. It will also help to allow for the building of Test Sequences by creating a Demo Actuator.

Getting started.

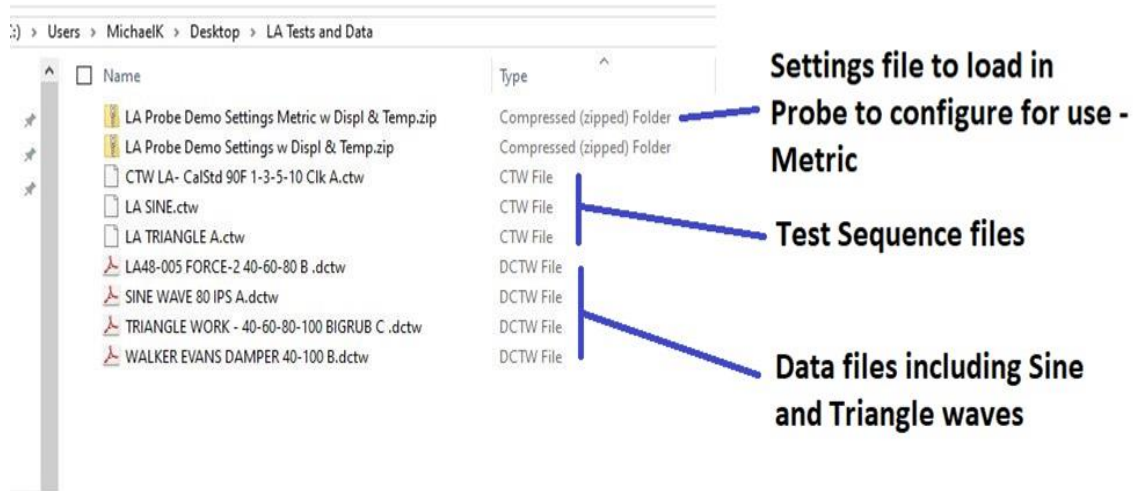
1 – go to <http://www.ctwautomation.com/> to get a copy of the software. It does not technically matter which one as they will all look for updates.

A - Software is listed under the Software tab - Download the latest version.

B - Also, download the sample files and settings from the: Manuals & Help tab
[Software - DEMO LA & EMA](#)

* LA & EMA Demo tools

It will contain: (2) Settings.zip files and (3) Test Sequence files (*.CTW) and (4) data files (*.DCTW)



2 - You can now begin the Software install by double clicking on the "EXE" file.

A - Pick "RD Dynos Only"



3 - Start the Probe Software.

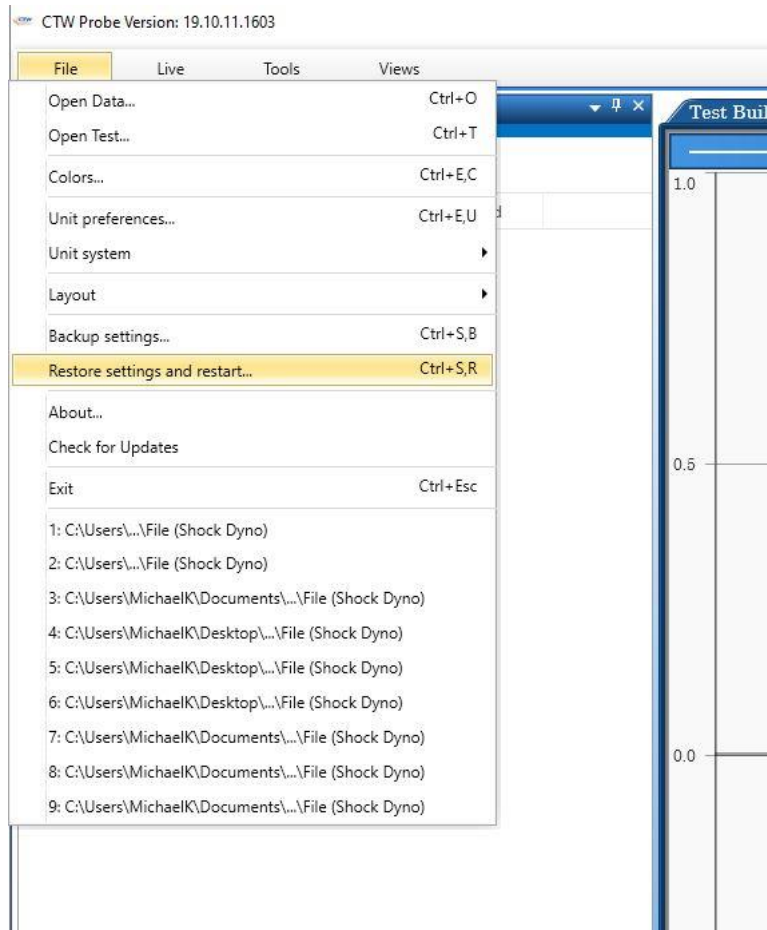
A - Now we want to load the Demo Settings file that CTW created to help this process. Go to “File” and then “Restore settings and restart.....” in the next window, please choose one of the Setting.Zip folders you downloaded in step 1 – B.

It will be one of (2) based on your Units preference

“LA Probe Demo Settings Metric w Displ & Temp.zip”

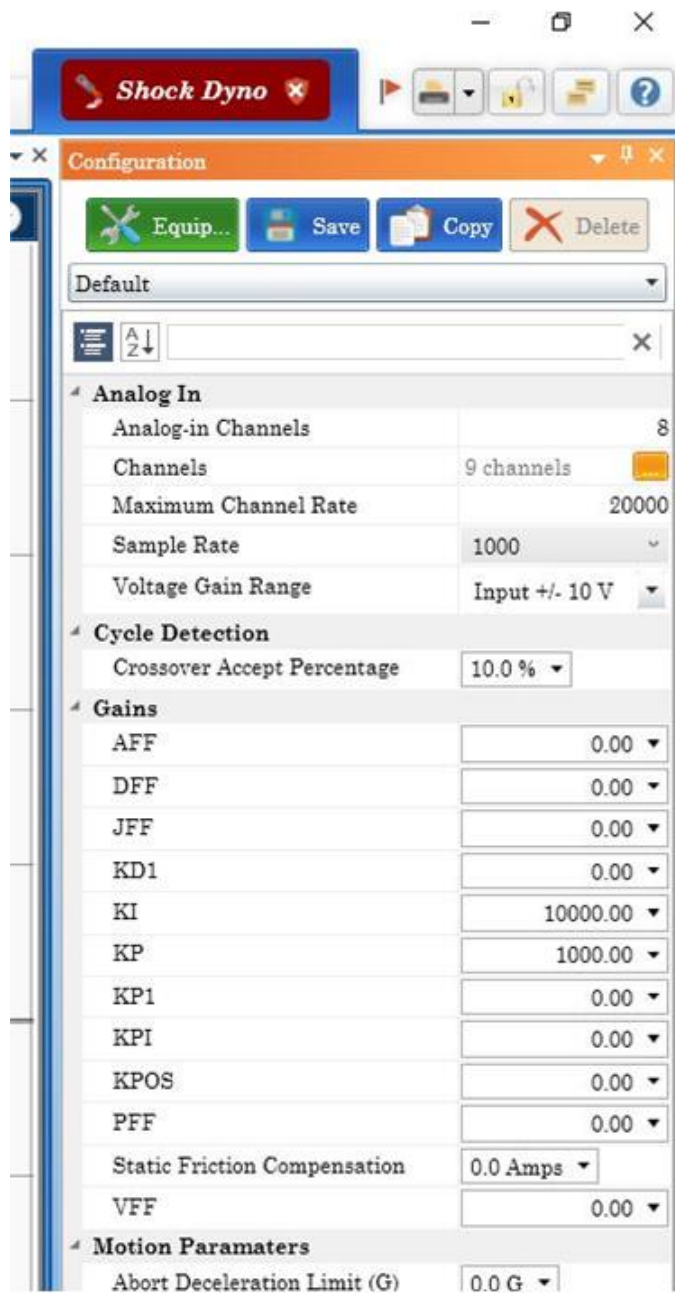
or

“LA Probe Demo Settings w Displ & Temp.zip”



The software should re-start and load the Settings file you chose.

4 - Then go to the Configuration Tab and click on the Green box "Equip...."



Select the "Demo Linear Actuator" and click ok to get back to the main screen.



Click on the Save icon at the top of Configuration tab.

Now you should be able to see in Test Builder the functions of the Linear actuator. You should also be able to build an actual Test Sequence that can be transferred to the operating computer.

You should watch the YouTube Videos for more help.

Our channel -

<https://www.youtube.com/channel/UCV6z3k7Dz5RVbSv0Jd19mzw>

4 videos on LA/EMA software

https://www.youtube.com/playlist?list=PLCXNeC1kjErcMheC_76pvB_J93dVmELYG